

Tulip Mini Bouquet



Fabric: 40 ct Lakeside Linens Exemplar but any neutral coloured fabric and 32 or 36 ct fabric can be used.

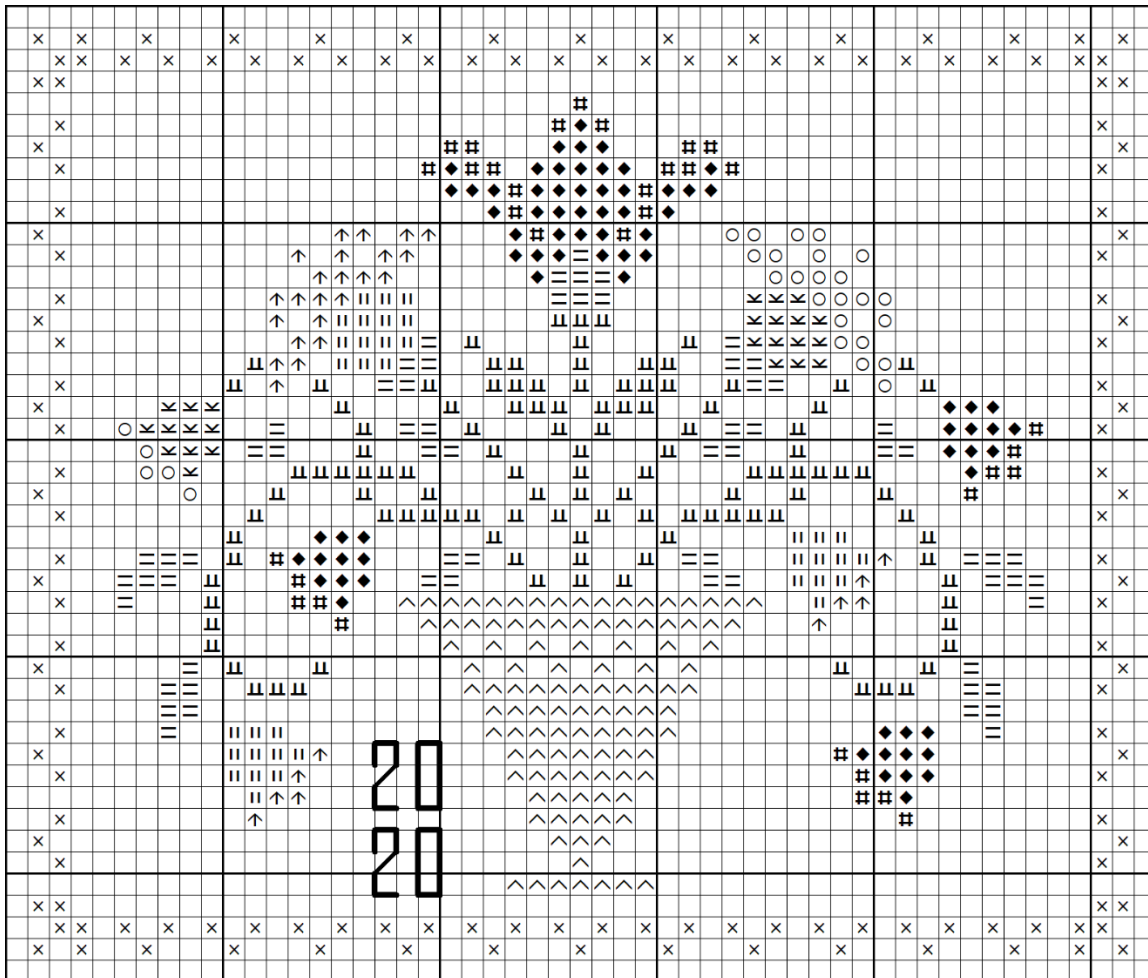
Design Count: 43 x 51

Design Size: 2 x 2 ¼"

Cross stitch using 1 strand on 36 and 40 ct and 2 strands on 32 ct in the colours noted.

Backstitch date in Blackbird. Finished as a tiny

pin pillow, I used 2 pins from puntinipuntini and trim from Access Commodities- Chenille colour -3333 Purple or from Lady Dot Creates -Chenille Anemone.



Classic Colorworks	
◆	Bandana
■	Blackbird
	French Lilac
○	Ginger Snap
↑	Highland Heather
#	Holly Berry
≠	Queen Bee
	Pine Needles
The Gentle Art	
^	Wood Trail
Weeks Dye Works	
×	Grits
=	Oscar

